

# MONTHLY MEMBERSHIP PROGRESS REPORT

LOCATION OKLAHOMA

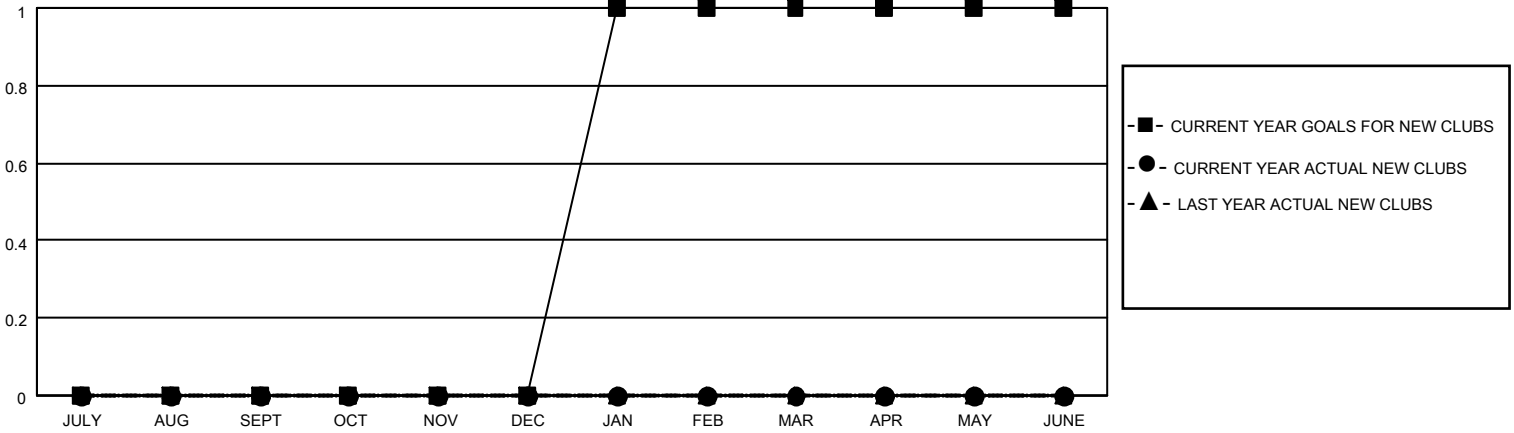
District 3 E

Results as of: 4/30/2022

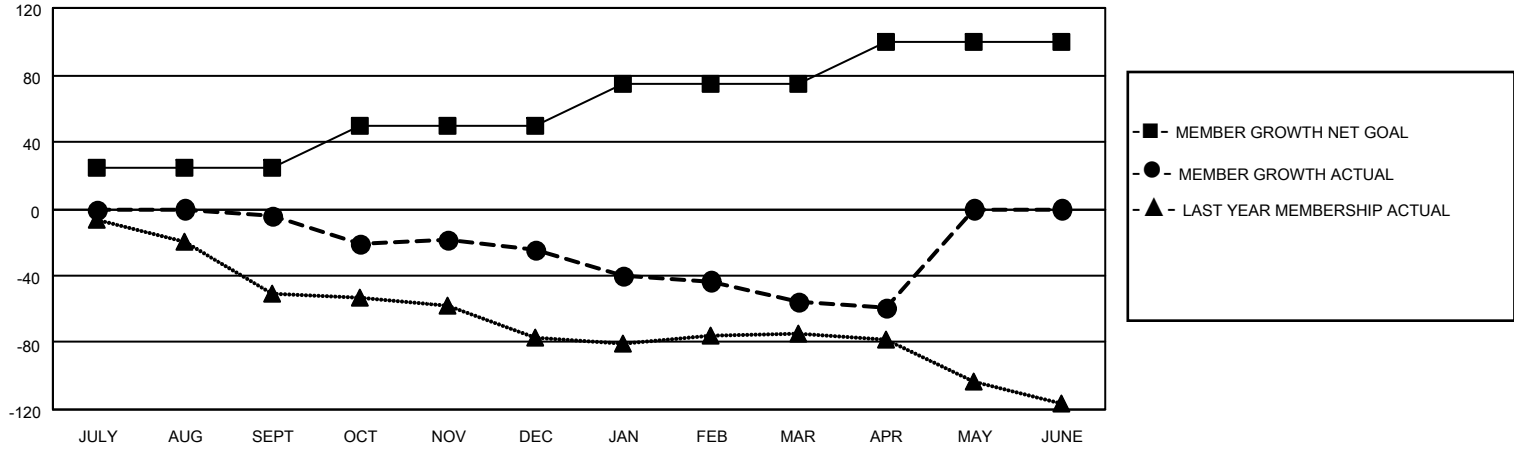
Clubs			
RESULTS FOR 2021-2022			
QUARTER	NEW CLUB GOAL	NEW CLUBS	DROPPED CLUBS
JULY/AUG/SEPT	0	0	1
OCT/NOV/DEC	0	0	1
JAN/FEB/MAR	1	0	0
APR/MAY/JUNE	0	0	0

Members			
RESULTS FOR 2021-2022			
QUARTER	MEMBER GROWTH NET GOAL	MEMBER GROWTH ACTUAL	DROPPED MEMBERS ACTUAL (including transfers)
JULY/AUG/SEPT	25	25	25
OCT/NOV/DEC	25	29	48
JAN/FEB/MAR	25	25	48
APR/MAY/JUNE	25	4	8

**GOALS AND ACTUAL NEW CLUBS CUMULATIVE**



**GOALS AND ACTUAL MEMBERS CUMULATIVE**



**DROPPED CLUBS: 2**

**20 CLUBS OF 42 ADDED 1 OR MORE NEW MEMBERS**

**GENDER DISTRIBUTION**

MALE	567 (63.35%)
FEMALE	328 (36.65%)
NON BINARY	0 (0.00%)
PREFER NOT TO ANSWER	0 (0.00%)

**DROPPED MEMBERS**

[CLICK HERE FOR CUMULATIVE MEMBERSHIP DATA](#)

DECEASED	13
CLUB CANCELLED	7
OTHER	109
<b>TOTAL</b>	<b>129</b>

TOTAL FAMILY UNIT MEMBERS	130
FAMILY MEMBERS PAYING HALF DUES	66